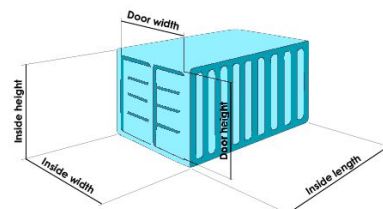


# BestWay

## Container Types

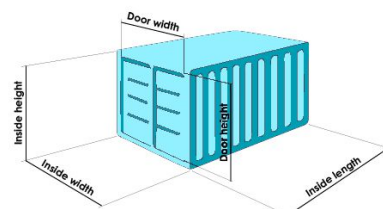
### Standard - Dry

	Inside Length	Inside Width	Inside Height	Door Width	Door Height	Capacity	Tare Weight	Maxi Cargo
20'	5.900 m	2.311 m	2.390 m	2.286 m	2.280 m	32.63 Cu.m	2,300 Kgs	28,180 Kgs
40'	12.036 m	2.350 m	2.392 m	2.340 m	2.280 m	67.70 Cu.m	3,700 Kgs	26,780 Kgs
40'HC	12.036 m	2.350 m	2.697 m	2.338 m	2.585 m	76.30 Cu.m	3,970 Kgs	26,510 Kgs



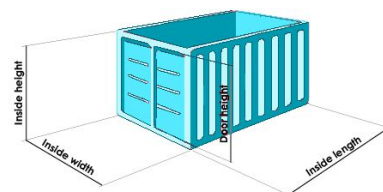
### Reefer

	Inside Length	Inside Width	Inside Height	Door Width	Door Height	Capacity	Tare Weight	Maxi Cargo
20'	5.425 m	2.275 m	2.260 m	2.258 m	2.216 m	28.30 Cu.m	3,200 Kgs	20,800 Kgs
40'	11.493 m	2.270 m	2.197 m	2.282 m	2.155 m	57.80 Cu.m	4,900 Kgs	25,580 Kgs
40'HC	11.557 m	2.294 m	2.500 m	2.294 m	2.440 m	66.60 Cu.m	4,500 Kgs	25,980 Kgs



### Open Top

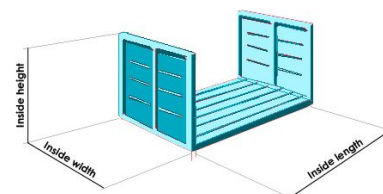
	Inside Length	Inside Width	Inside Height	Door Width	Door Height	Capacity	Tare Weight	Maxi Cargo
20'	5.894 m	2.311 m	2.354 m	2.286 m	2.184 m	32.23 Cu.m	2,400 Kgs	21,600 Kgs
40'	12.028 m	2.350 m	2.345 m	2.341 m	2.274 m	65.50 Cu.m	3,850 Kgs	26,630 Kgs
40'HC	12.028 m	2.350 m	2.645 m	2.340 m	2.585 m	74.90 Cu.m	4,830 Kgs	26,570 Kgs



### Flat Rack

Las medidas exactas de los contenedores dependen del fabricante por lo que estas medidas deben servir únicamente de estimación.

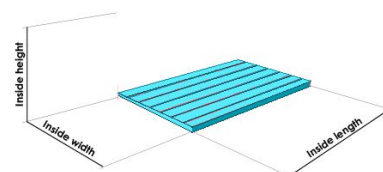
	Inside Length	Inside Width	Inside Height	Tare Weight	Maxi Cargo
20'	5.620 m	2.200 m	2.233 m	5,530 Kgs	21,470 Kgs
40'	12.080 m	2.438 m	2.130 m	5,480 Kgs	39,000 Kgs



Estos son los contenedores mas habituales, existen mas tipos de contenedores.

### Platform

	Inside Length	Inside Width	Inside Height	Tare Weight	Maxi Cargo
20'	6.058 m	2.438 m	2.233 m	2,750 Kgs	24,000 Kgs
40'	12.18 m	2.40 m	1.95 m	5,800 Kgs	39,200 Kgs



**Consúltenos para más información.**